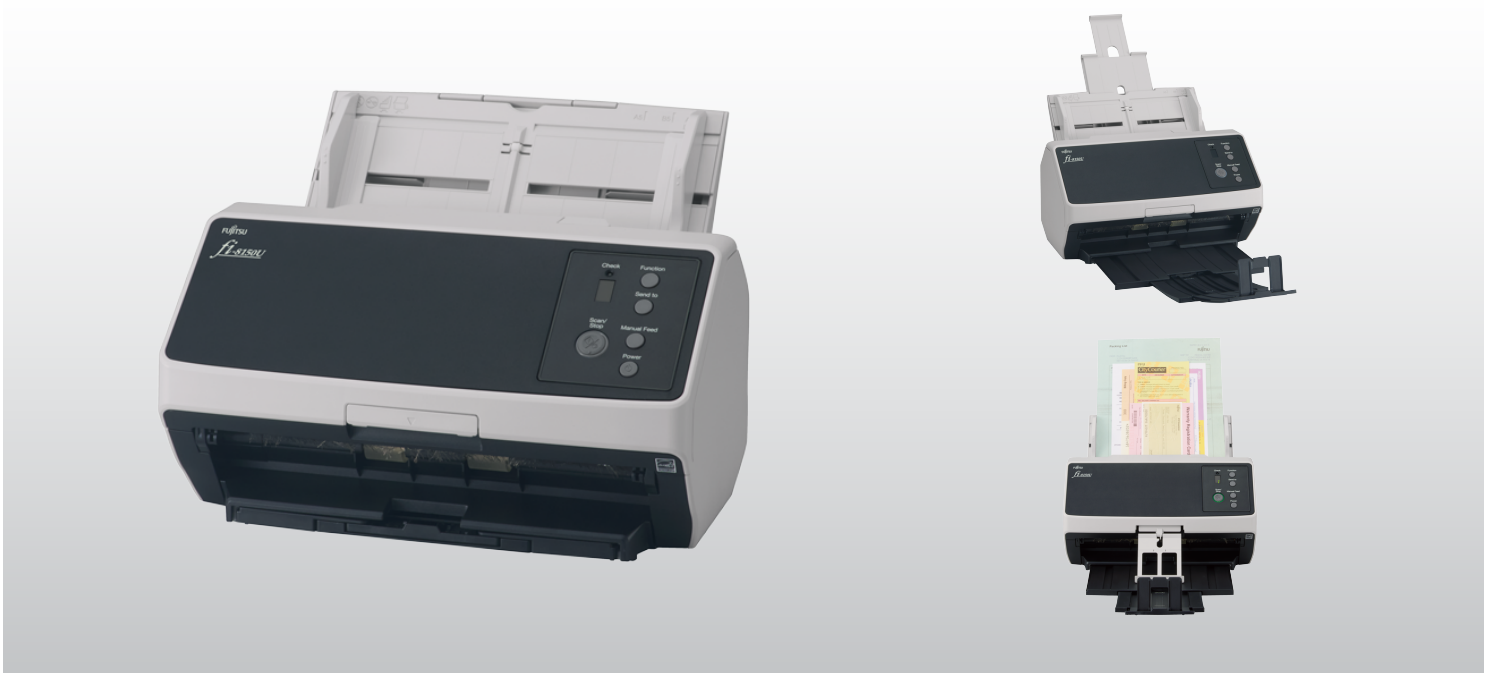


# Datasheet

## FUJITSU Image Scanner fi-8150U

Efficiency at new heights with evolved feeding



■ **Reliable.** State-of-art feeding and optical technologies.

■ **Quality images.** The best you can get.

■ **Paper handling.** Scan with confidence.

### State-of-art feeding technology - streamline workflow

In the "Manual Feed Mode", the fi-8150U scans copy forms and passports or booklets up to thicknesses of 7 mm with the carrier sheet. Precise multi-feed detection on a wide range of documents like plastic cards and documents with attachments, enable continual scanning with the same profiles. In addition, the "Automatic Separation Control" optimizes paper feed to match the number of sheets loaded, preventing interruptions. "Image Monitoring" also performs checks, real-time, for image skews, and provides enhanced paper protection.

### Optimized high-quality images

The fi-8150U comes with "Clear Image Capture", a unique and dedicated image correction technology that generates unparalleled, high-definition images while keeping power consumption to the minimum. Quality images with no missing edges can be ensured with the scanner's Skew Reducer mechanism.

### Better usability and flexibility for any environment

The fi-8150U supports USB 3.2 connectivity. The flexibility to use with imprinter options opens up the capability for total document management and assists in document archiving requirements that are prevalent in many industries.

### Efficiency optimized, simplicity achieved, with expanded software functionalities

The scanner driver, PaperStream IP, comes with a simplified, user-friendly interface that provides icon visibility for easy setting configurations. Users can consistently achieve scanned outputs of correct orientations with the "Automatic Rotation" function, and store frequently scanned documents in specific formats using the "pattern matching" method. Efficiency with simplification brings users, a reduction to operation time as well - on frequent and routine operations like deleting blank pages, or correcting page orientations, just by following the optimal settings suggested by the "Settings Assistant" on the integrated PaperStream Capture software. Documents can be retrieved more efficiently with the "PDF keyword setting" function, instead of being constrained to file names alone.

## Technical Information

Scanner Type	ADF (Automatic Document Feeder) / Manual Feed, Duplex
Scanning Speed* <sup>1</sup> (A4 Portrait) (Color*/Grayscale*/Monochrome*)	Simplex: 50 ppm (200/300 dpi) Duplex: 100 ipm (200/300 dpi)
Image Sensor Type	CIS x 2 (front x 1, back x 1)
Light Source	RGB LED x 2 (front x 1, back x 1)
Optical Resolution	600 dpi
Output Resolution** (Color / Grayscale / Monochrome)	50 to 600 dpi (adjustable by 1 dpi increments), 1,200 dpi (driver)**
Output Format	Color: 24-bit, Grayscale: 8-bit, Monochrome: 1-bit
Background Colors	White / Black (selectable)
Document Size	
Maximum* <sup>6</sup>	215.9 x 355.6 mm (8.5 x 14 inch)
Minimum	48 x 50 mm (1.9 x 2 inch)
Long Page Scanning	6,096 mm (240 inch)
Paper Weight (Thickness)	
Paper	20 to 465 g/m <sup>2</sup> (5.3 to 124 lb)* <sup>7</sup>
Booklet	Less than 7 mm (0.276 inch)* <sup>8</sup>
Plastic Card	1.4 mm (0.055 inch) or less* <sup>9</sup>
ADF Capacity* <sup>10</sup> * <sup>11</sup>	100 sheets (A4 80 g/m <sup>2</sup> or Letter 20 lb)
Expected Daily Volume* <sup>12</sup>	8,000 sheets
Multifeed Detection	Overlap detection (Ultrasonic sensor), Length detection
Paper Protection	Image monitoring
Interface	
USB	USB 3.2 Gen1x1 / USB 2.0 / USB 1.1
Power Requirements	AC 100V - 240V 50/60 Hz
Power Consumption	
Operating Mode	21 W or less / 17 W (Eco mode)
Sleep Mode	1.4 W or less
Auto Standby (Off) Mode	0.2 W or less
Operating Environment	
Temperature	5 to 35 °C (41 to 95 °F)
Relative Humidity	15 to 80% (non-condensing)

Environmental Compliance	ENERGY STAR®, RoHS
Dimensions* <sup>13</sup> (Width x Depth x Height)	300 x 170 x 163 mm (11.8 x 6.7 x 6.4 inch)
Weight	4 kg (8.8 lb)
Supported Operating System	Windows® 11, Windows® 10, Windows® 8.1, Windows® 7, Windows Server® 2022, Windows Server® 2019, Windows Server® 2016, Windows Server® 2012 R2, Windows Server® 2012, Windows Server® 2008 R2, macOS, Linux (Ubuntu)
Included Software / Drivers	PaperStream IP Driver (TWAIN/TWAIN x64/ISIS), WIA Driver* <sup>14</sup> , Image Scanner Driver for macOS (ICA)* <sup>14</sup> * <sup>15</sup> , Image Scanner Driver for Linux (SANE)* <sup>14</sup> * <sup>15</sup> , PaperStream Capture, PaperStream ClickScan* <sup>15</sup> , Software Operation Panel, Error Recovery Guide, ABBYY FineReader for ScanSnap™* <sup>15</sup> , Scanner Central Admin
Image Processing Functions	Multi image output, Automatic color detection, Blank page detection, Dynamic threshold (iDTC), Advanced DTC, SDTC, Error diffusion, Dither, De-Screen, Emphasis, Dropout color (None/Red/Green/Blue/White/Saturation/Custom), sRGB output, Hole punch removal, Index tab cropping, Split image, De-Skew, Edge filler, Vertical streaks reduction, Background pattern removal, Cropping, Static threshold
Included Items	ADF paper chute, AC cable, AC adapter, USB cable, Setup DVD-ROM

## Options

Post Imprinter (FI-819PRB)	PA03810-D201	Prints on the back of the document
Carrier Sheets	PA03360-0013	Pack of 5 sheets
Photo Carrier Sheets	PA03770-0015	Pack of 3 sheets
Booklet Carrier Sheet	PA03810-0020	Pack of single sheet
2D Barcode for PaperStream	PA43404-A433	Reads PDF417, QR code, Data Matrix, Aztec Code
PaperStream Capture Pro Scan Station (WG)	PA43404-A665	PaperStream Capture Pro optional license

## Consumables

Brake Roller	PA03810-0001	Every 200,000 sheets or one year
Pick Roller	PA03670-0002	Every 200,000 sheets or one year
Print Cartridge	CA00050-0262	4,000,000 printed characters or 6 months after opening the package

\*<sup>1</sup> Actual scanning speeds may vary with data transmission and software processing times. \*<sup>2</sup> Indicated speeds are from using JPEG compression. \*<sup>3</sup> Indicated speeds are from using TIFF CCITT Group 4 compression.  
\*<sup>4</sup> Selectable maximum resolution may vary depending on the length of the scanned document. \*<sup>5</sup> Limitations may apply to the size of documents that can be scanned, depending on system environment, when scanning  
at high resolution (over 600 dpi). \*<sup>6</sup> Maximum document width possible for scanning is 240 mm (9.5 inch). \*<sup>7</sup> Thicknesses of up to 128 to 209 g/m<sup>2</sup> (34 to 56 lb) can be scanned for A8 (52 x 74 mm / 2.1 x 2.9 inch) sizes.  
\*<sup>8</sup> Booklet scanning requires use of Booklet Carrier Sheets. Indicated thickness is inclusive of Booklet Carrier Sheet thickness. \*<sup>9</sup> Continuous feeding is supported when scanning up to 10 unembossed cards with thicknesses  
of 0.76 mm or less. \*<sup>10</sup> Maximum capacity depends on paper weight and may vary. \*<sup>11</sup> Capable of setting additional documents while scanning. \*<sup>12</sup> Numbers are calculated using scanning speeds and typical hours  
of scanner use, and are not meant to guarantee daily volume or unit durability. \*<sup>13</sup> Excludes the ADF paper chute and stacker. \*<sup>14</sup> Functions equivalent to those offered by PaperStream IP may not be available with the  
Image Scanner Driver for macOS/Linux or WIA Driver. \*<sup>15</sup> Refer to the fi Series Support Site for driver/software downloads and full lineup of all supported operating system versions. <https://www.fujitsu.com/global/support/products/computing/peripheral/scanners/fi/>.

## Trademarks

ISIS is a trademark of Open Text. Microsoft, Windows, and Windows Server are either registered trademarks or trademarks of Microsoft Corporation in the United States and/or other countries. macOS is a trademark of Apple Inc., registered in the U.S. and other countries. Linux is the registered trademark of Linus Torvalds in the U.S. and other countries. Any other products or company names appearing in this document are the trademarks or registered trademarks of the respective companies.

## Safety Precautions

Please carefully read the safety precautions prior to the use of this device and follow the recommended instructions for correct use. Do not place this device in wet, moist, highly humid, dusty or oily areas. Use of this device under such conditions may result in electrical shock, fire or damage to the device. Please use this device within the power ratings listed.

## ENERGY STAR®

PFU Limited, a Fujitsu company, has determined that this product meets the ENERGY STAR® guidelines for energy efficiency. ENERGY STAR® is a registered trademark of the United States.

Specifications are subject to change without notice. Visit your local Fujitsu website for more information.

## Contact

<b>Indonesia</b> PT Fujitsu Indonesia Tel: +62 21 570 9330 marketing_fid@fujitsu.com www.fujitsu.com/id/scanners	<b>Malaysia</b> Fujitsu (Malaysia) Sdn Bhd Tel: +603 8230 4188 askfujitsu.my@fujitsu.com www.fujitsu.com/my/scanners	<b>Philippines</b> Fujitsu Philippines, Inc. Tel: +63 2 841 8488 info@ph.fujitsu.com www.fujitsu.com/ph/scanners	<b>Singapore</b> Fujitsu Asia Pte Ltd Tel: +65 6512 7555 scanner@fujitsu.com www.fujitsu.com/sg/scanners	<b>Thailand</b> Fujitsu (Thailand) Co., Ltd. Tel: +66 2 302 1500 info.th@fujitsu.com www.fujitsu.com/th/en/scanners	<b>Vietnam</b> Fujitsu Vietnam Limited Tel: + 84 4 2220 3113 sales-vn@fujitsu.com www.fujitsu.com/vn/en/scanners
--	--	--	--	---	--